



# Organizing for health equity

Luis Manriquez, MD

Assistant Clinical Professor WSU Elson S Floyd College of Medicine

Regional Organizer, Health Equity Circle

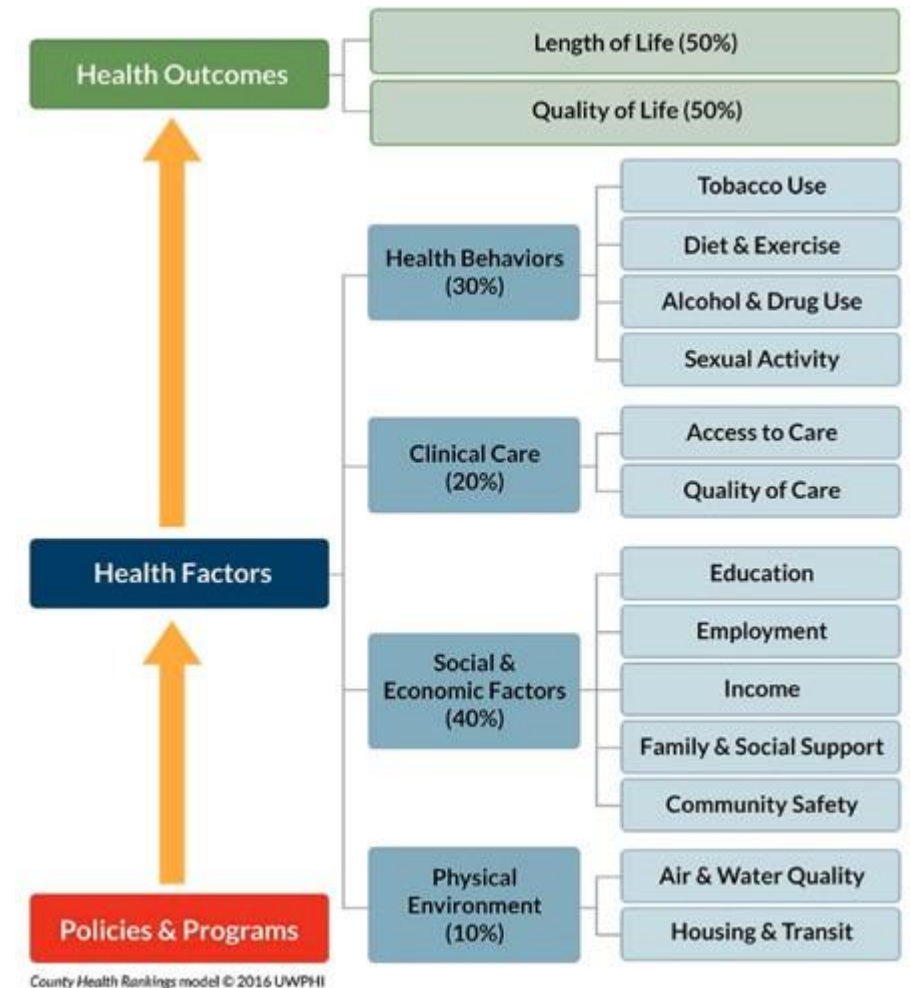
Co-Director Health Equity Organizing, IAF-NW

Clinical Instructor, UW College of Medicine



# Social Determinants of Health

- **1. As a determinant of health, medical care is insufficient for ensuring better health outcomes.**
- **2. How do we intervene without medicalizing SDoH?**
- **3. What (new) data are needed?**

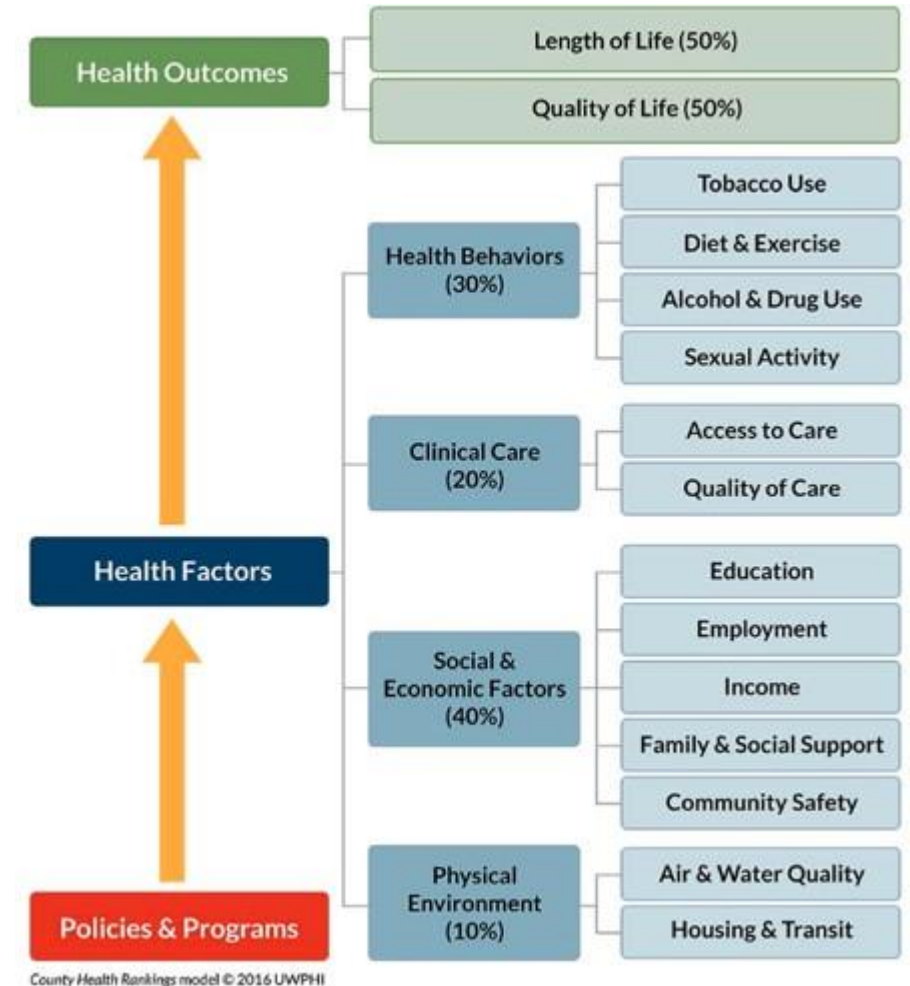




# Social Determinants of Health

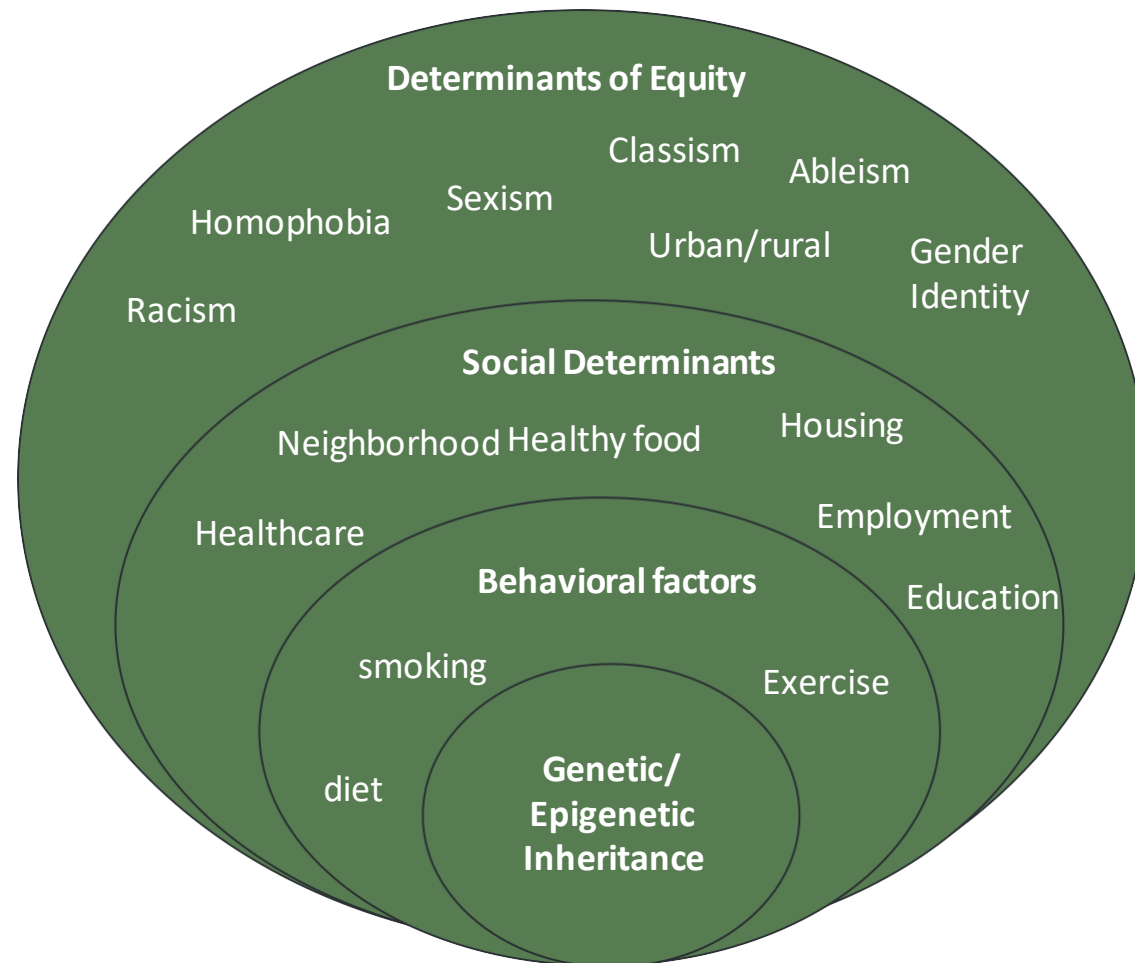
Take 5 minutes to think about your own story and your families story. What has affected your health, your family's health?

Then pair off and take 10 minutes to discuss with a partner.



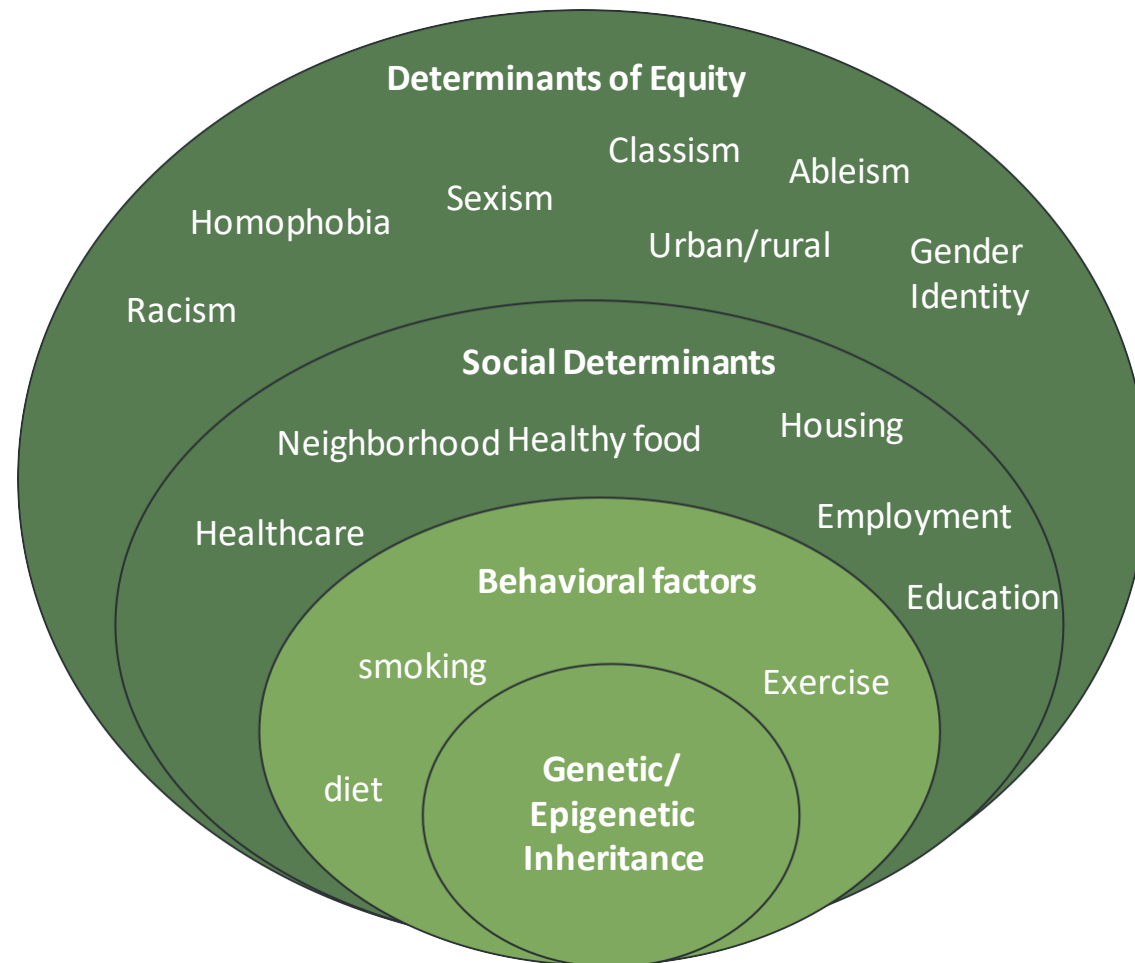


# What is Health Equity?





# What is Health Equity?





# Health Equity

The assurance of the conditions of optimal health for all

Inequity: 3 core components

- multiple axes of inequities

- 1) One group is unjustly disadvantaged
- 2) One group is unjustly advantaged
- 3) The whole is made less by the loss of human potential





# Odds Against Tomorrow

2012 report on health inequities in Spokane

- Nearly 18 year difference in life expectancy from Southgate to Riverside (downtown)
- 13.5 year difference in mean age of death between non-Hispanic white and Native Americans
- This is because of the social determinants of health and social determinants of equity



## ODDS AGAINST TOMORROW

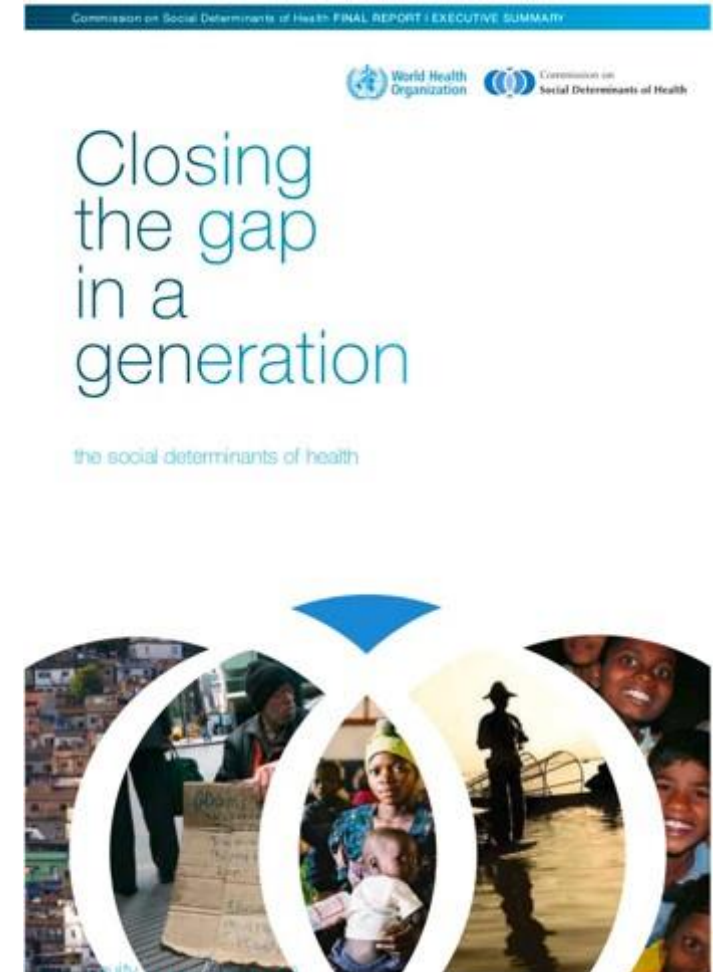
HEALTH INEQUITIES in SPOKANE COUNTY

- EDUCATION
- HOUSEHOLD INCOME
- RACE/ETHNICITY
- PLACE/NEIGHBORHOOD



# Social Determinants of Health

- **1. Improve daily living conditions**
- **2. Tackle the inequitable distribution of power, money, resources**
- **3. Measure and understand the problem and assess the impact of action**







Elson S. Floyd  
College of Medicine

## Community Health Center Roots





## Community Health Center Roots





## The doctor's role in Health Equity

If “structural competency is taken to imply that physicians can change politically determined social determinants of health *in the course of the clinical encounter,*

I disagree



Physicians for  
Human Rights





Elson S. Floyd  
College of Medicine





Elson S. Floyd  
College of Medicine

## Spokane Street Medicine





# Spokane Street Medicine

**Launched in response to Covid-19**

- **Homeless outreach worker**
- **WSU Clinician**
- **SRHD staff**
- **WSU Interprofessional students**





## Partnership between

- **WSU Health Sciences/Range Community Clinic**
- **CHAS**
- **Spokane Regional Health District**
- **SNAP**
- **Jewels Helping Hands**
- **Frontier Behavioral Health**
- **Salvation Army**
- **Goodwill**
- **Catholic Charities**
- **Volunteers of America**





## Spokane Street Medicine

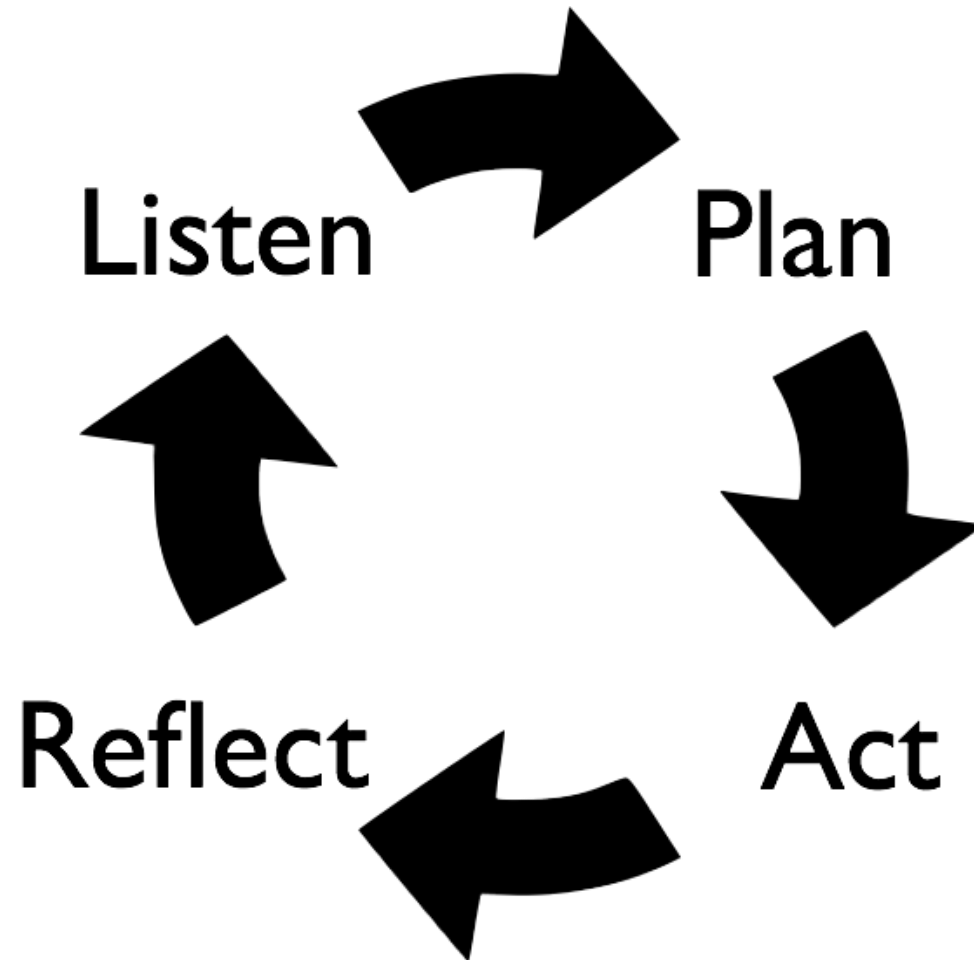
- **Triage hotline for homeless services**
- **Street medicine rounds**
- **Community partner clinics**
- **Clinical on call capacity**







## Community Organizing





## Community organizing

Broad based alliances of community institutions that come together to use their collective power to advance a vision of the common good





Elson S. Floyd  
College of Medicine

"I support  
earned sick and  
safe leave so my  
patients can get  
the care they  
need before it's  
an emergency."

-BILL LOCKWOOD,  
SPOKANE PHYSICIAN



The logo for Spokane Alliance, featuring a stylized human figure with arms raised, enclosed in a circle, with a yellow sun-like shape above it.  
**SPOKANE ALLIANCE**  
*Organizing for the Common Good.*



Elson S. Floyd  
College of Medicine

## Clinic Based Organizing

Clinic as base for organizing staff, patients and community organizations to address the social determinants of health

OHSU Richmond clinic, Portland

Portland: \$67 million increased funding for affordable housing

Prescription labelling legislation

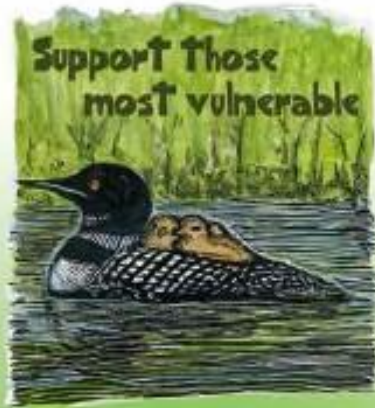
# HEAL-R

HEALTH EQUITY AND LEADERSHIP | RICHMOND





# Questions?



*What to do  
in a pandemic...*  
**Our cousins know.**