

Welcome!

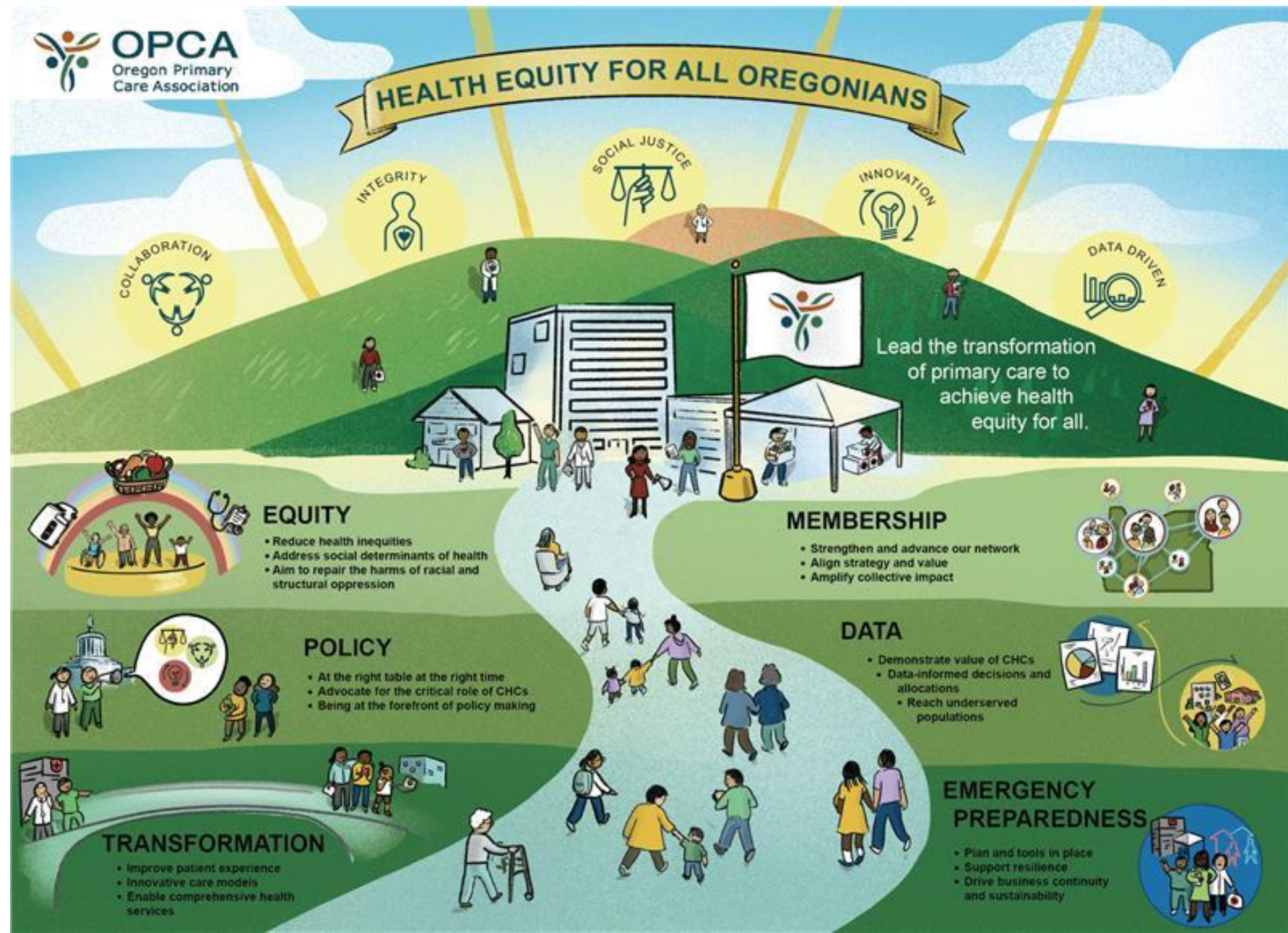
Advanced Care Learning Community Virtual Conference

Building Value Based Care Strategy

June 6 & 7 2022 from 9:00 -12:15pm PST / 10:00 – 1:15pm MST

This program is supported by the Health Resources and Services Administration (HRSA) of the U.S. Department of Health and Human Services (HHS) as part of an award totaling \$1,789,675 with 47% financed with non-governmental sources. The contents are those of the author(s) and do not necessarily represent the official views of, nor an endorsement, by HRSA, HHS, or the U.S. Government. For more information, please visit HRSA.gov.

Oregon Primary Care Association





Please mute your line when you are not speaking



Use of camera is encouraged when speaking or during group discussions



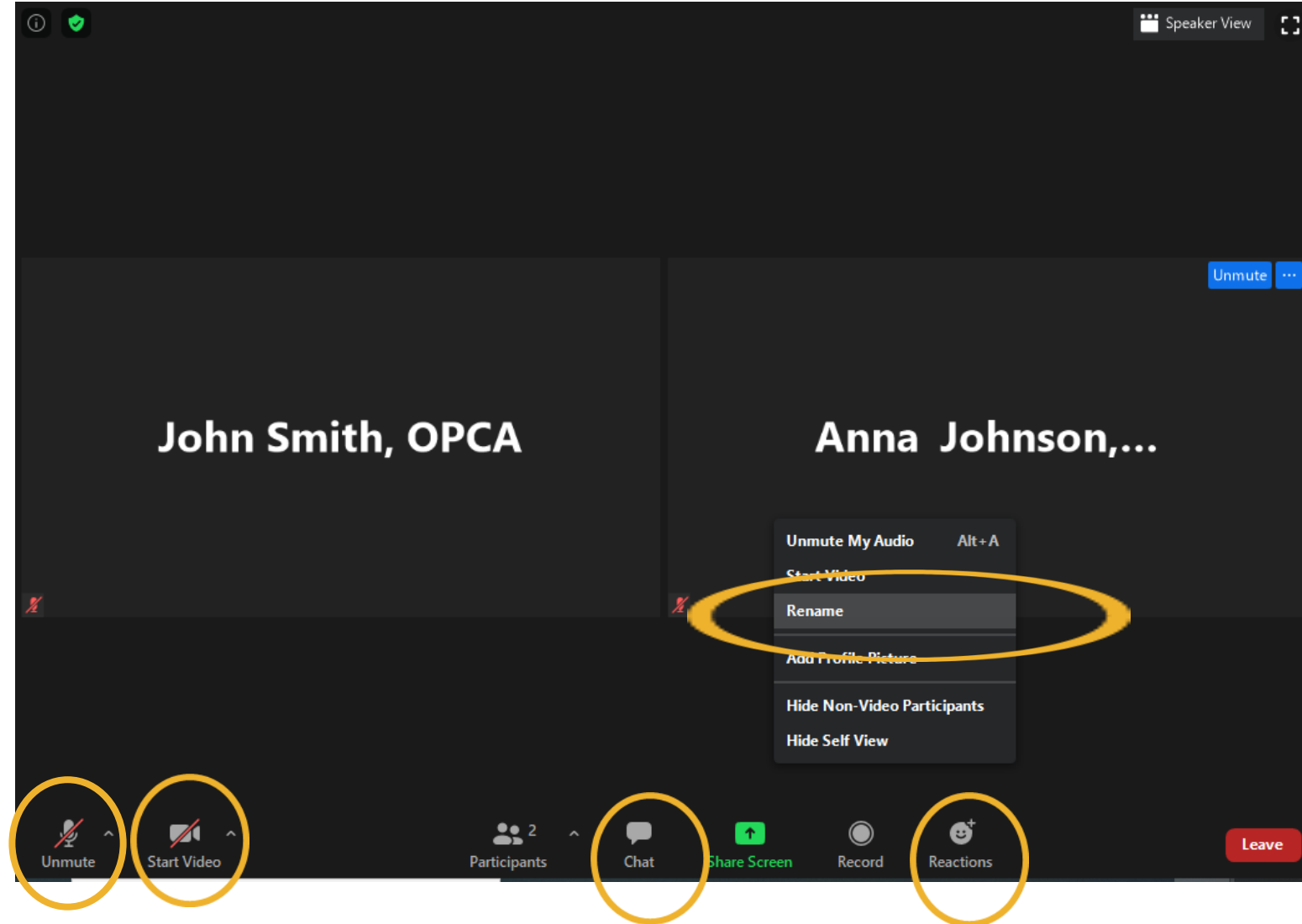
Let us know who you are! 'Rename' yourself to include your preferred name, pronouns and organization



Use the chat freely! Send kudos, ask questions, and connect with peers



Feeling a sort of way? Express yourself with the 'Reactions' feature!



This event will be recorded

Objectives

Learn

Learn from health center peers about their value-based contracting community efforts to provide population-based health care.

Acquire

Acquire sustainable strategies for health care transformation and workforce wellness within an evolving environment.

Tuesday, June 7, 2022

Agenda

Time	Session
9:00	Welcome
9:15	Oregon Value-Based Contracting
10:30	Break
10:45	Break-out Sessions
	#1 Oregon Value Based Contracting Health Leadership Panel
	#2 Building a Workforce with a Trauma-informed Lens
	#3 Exploring the use of Z-Codes
12:00	Wrap-Up
12:15	End

Oregon Value-Based Contracting

Efforts from the Community Health Center Network of Oregon and
CareOregon

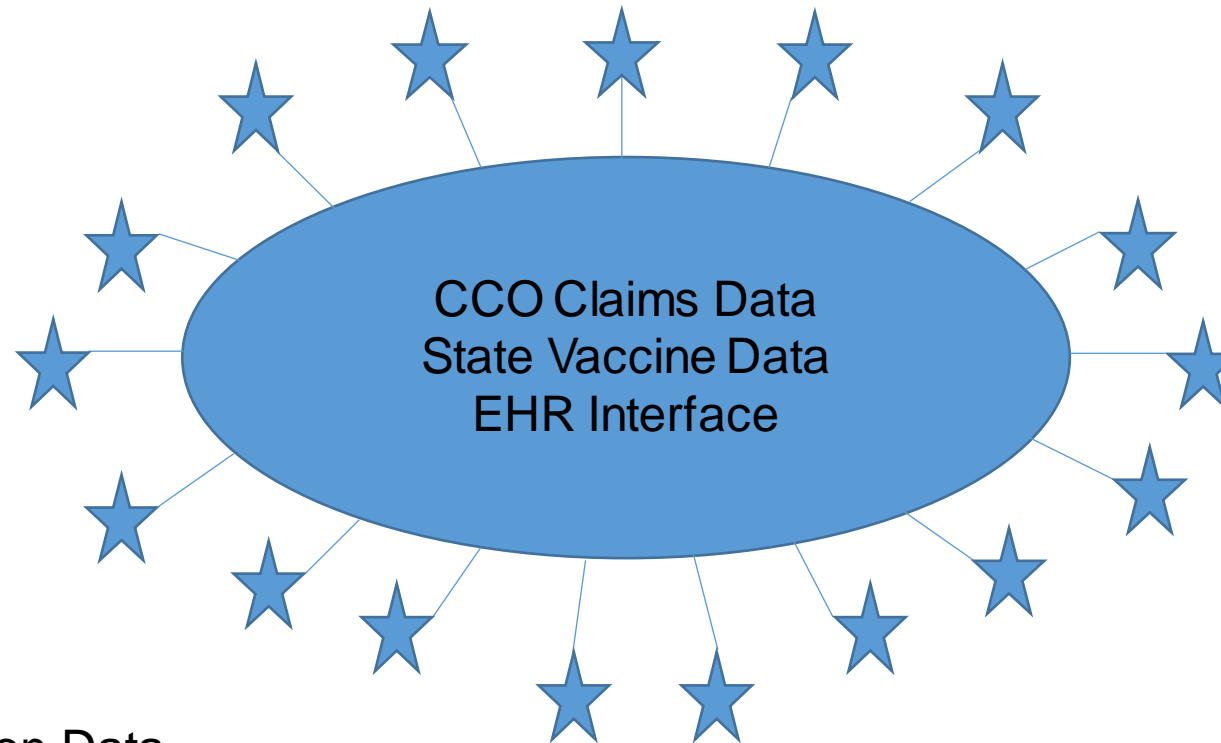
COMMUNITY
HEALTH
CENTER
NETWORK
OF OREGON

Founded September 2nd, 2020
Health Center Controlled
Clinically Integrated Network

SAFE HARBOR

Clinical integration allows CHCs to share cost, quality and performance data, contract together and share business practices without violating anti-trust laws

Centralized Data Platform

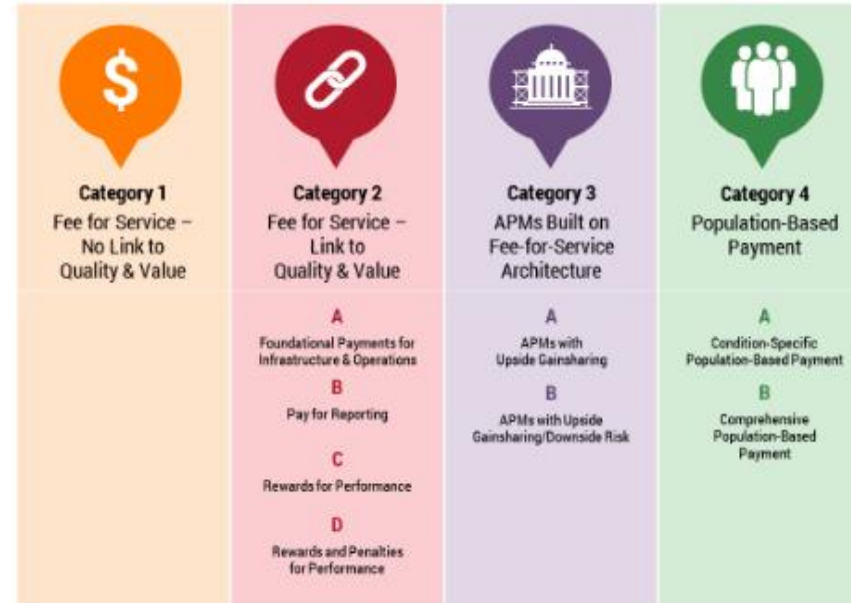


- Attribution Data
- TCOC
- Near Live-time Quality Reports
- Targeted Performance Dashboard

- GAP Lists
- Equity Data
- Standardized Best Practices

Value Based Pay - Through the Network

OHA LAN Model



Pay for Performance	Shared Savings Against TCOC		Capitated Full Risk
Incentive Measures Care Coordination PMPM	Upside \$	Upside/Downside \$\$	Population Health \$\$\$

Shared Cost Target
Shared Risk Pool (Population)
Shared Savings
Shared Risk Reserve

Shared Accountability Model (SAM)

June 7th, 2022

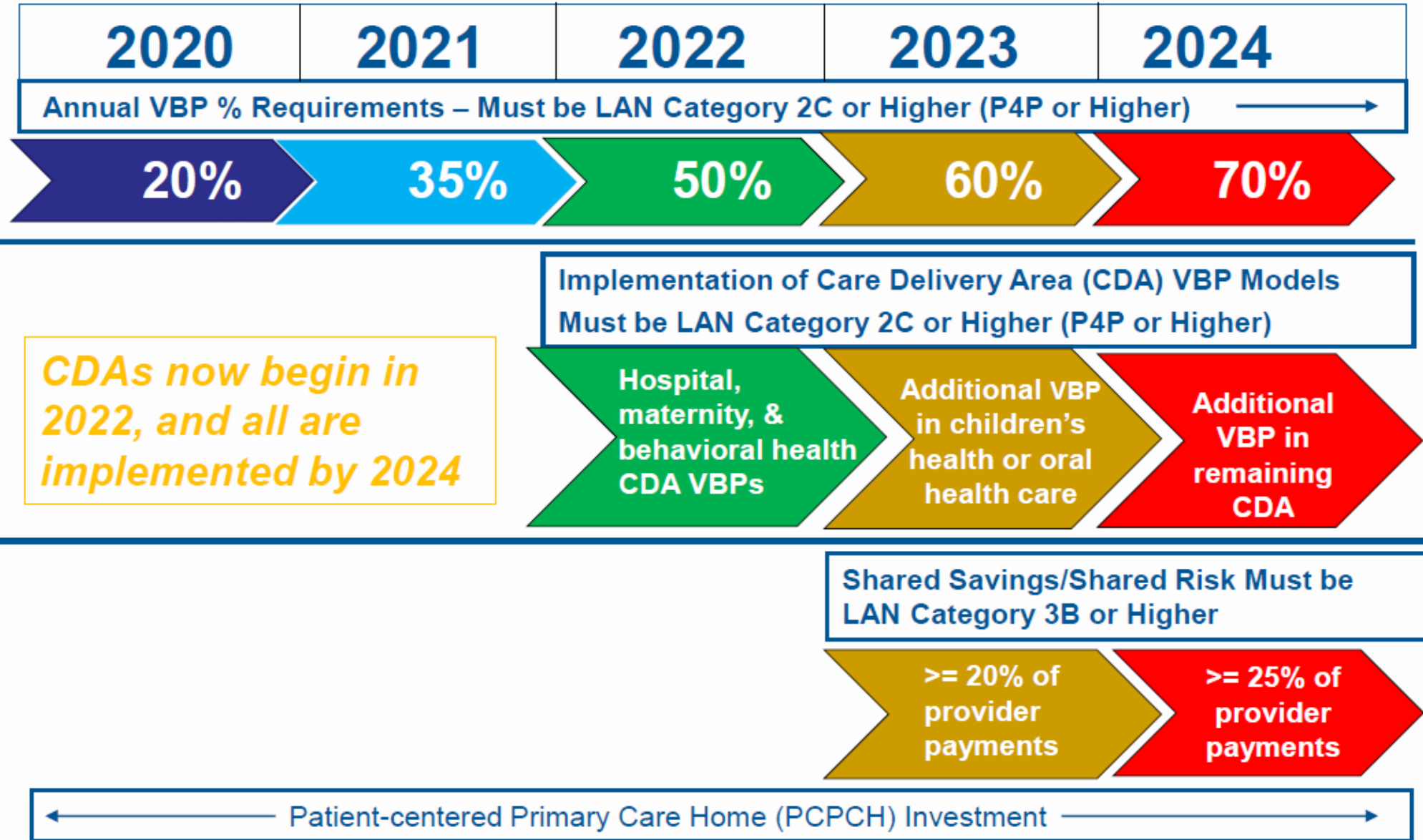
Angela Mitchell
Vice President, Value Based Purchasing

Beth Sommers
Director, Innovation and Improvement

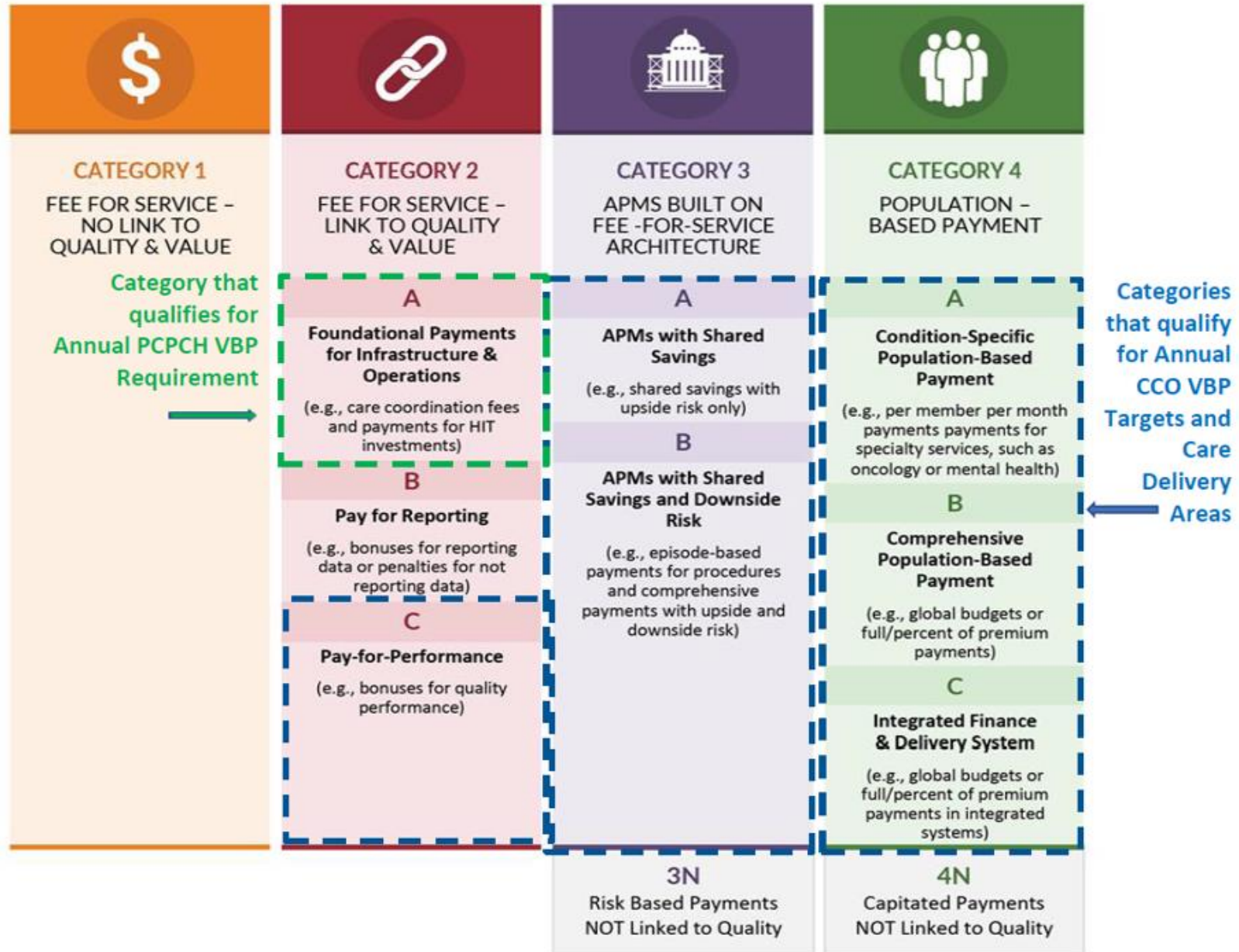
careoregon.org
twitter.com/careoregon
facebook.com/careoregon



CCO 2.0 VBP Requirements



LAN VBP Categories



CareOregon's Mission and Vision

Managing care together

- **Mission:** Inspire and partner to create quality and equity in individual and community health.
- **Vision:** Healthy communities for all individuals, regardless of income or social circumstances.



What is Shared Accountability Model (SAM)?

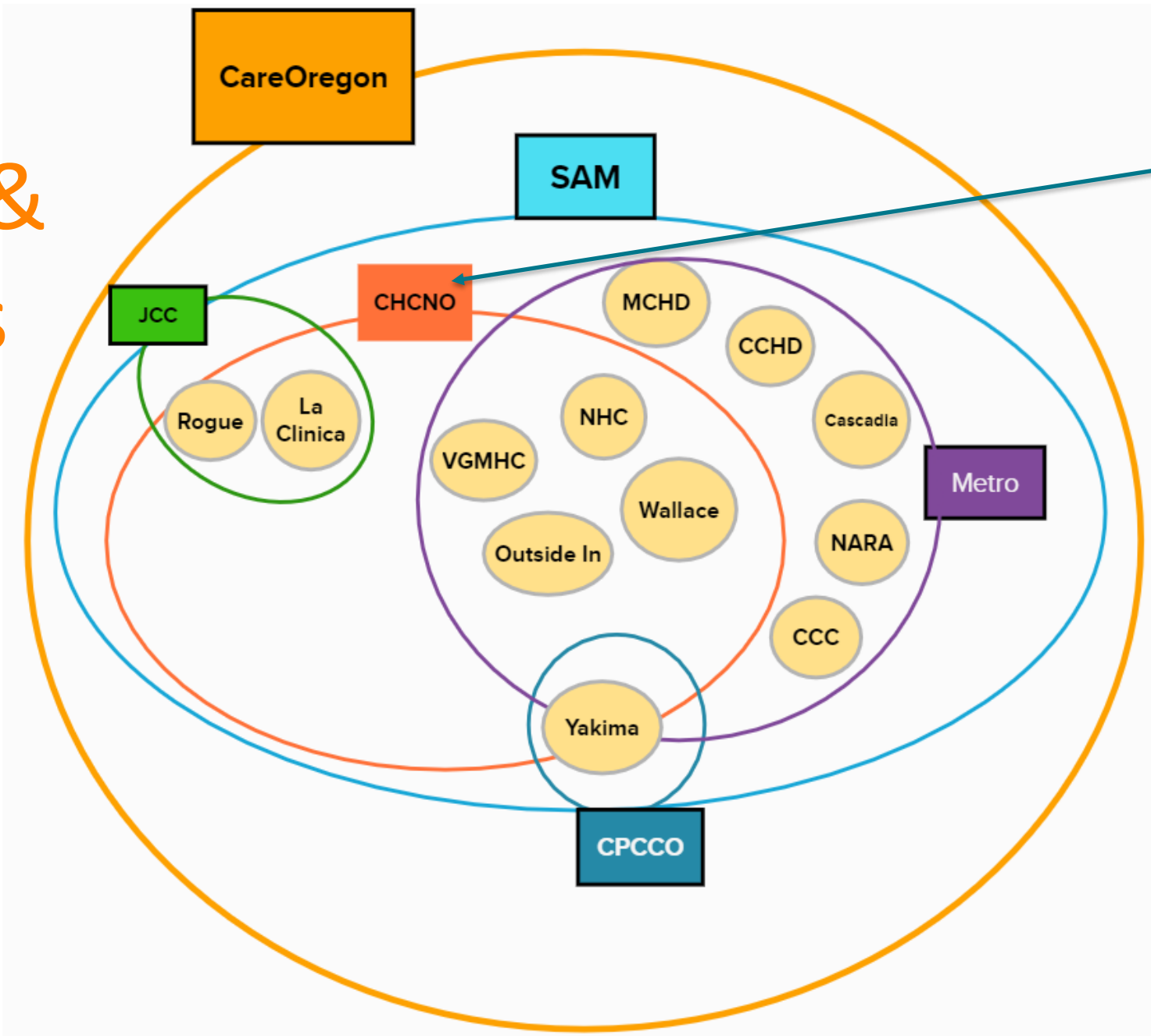
Value Based Payment for FQHCs

- A **Value Based Payment** model with 9 FQHC partners that incentivizes improving the value of members overall health care experience while sharing in cost savings opportunities
 - Meets the goals of CCO 2.0 and CCO 3.0 to further system transformation and implement value-based payment models with increasing levels of shared accountability across our network
 - Supports a long history of innovating and co-creating with our clinic partners
 - Enables us to co-create a Total Cost of Care model together



FQHC Partners & Dynamics

SAM membership:
100,000 Medicaid



SAM = Win-Win scenario

Why is SAM important to FQHCs and CareOregon ?

- The Shared Accountability Model mirrors the goals and missions of all involved
- Leverage each other's strengths
- There is a depth of expertise and desire to make VBPs successful – lever to create win-win outcomes
- CareOregon and the FQHCs partner together to create clinical, cost and equity interventions
- Establish standards to help shape policy around health equity and SDoH
- Share data that shows the Total Cost of Care for the population to inform interventions

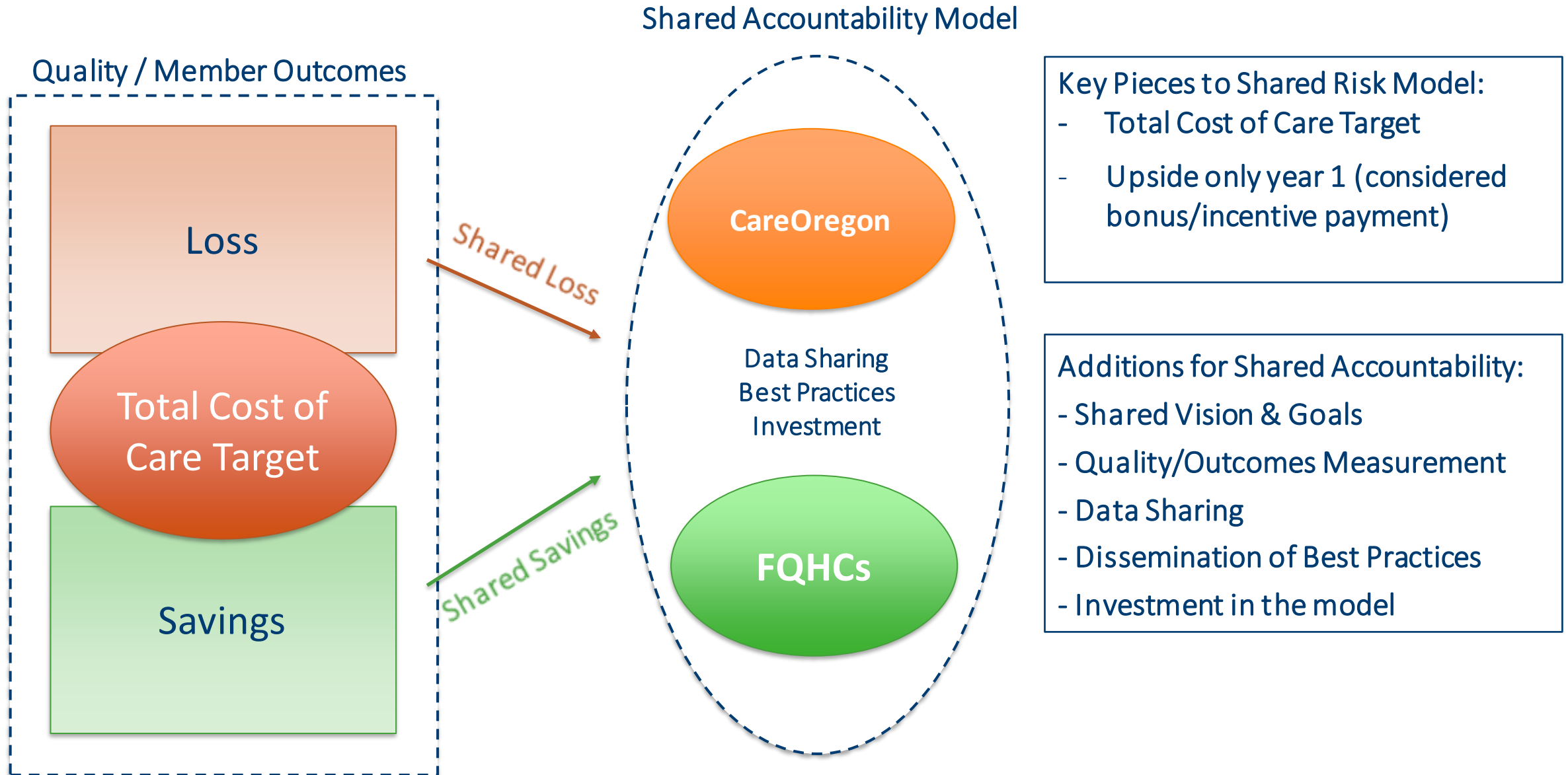


CareOregon & FQHCs Shared Goals

- Aligned Mission, Vision and Goals
- Co-designed approach with shared ownership and accountability
- Supporting FQHCs service redesign, data and analytics, and practice transformation
- Align shared savings around cost reduction, quality outcomes and member experience
- Support providers and community partners in working together to improve quality care and reduce avoidable costs and utilization
- Create value-based payment arrangement that create a “win-win”
- Share meaningful data that will give information to support improved performance for cost and quality



SAM VBP Design



SAM Governance – Working Together

Oversight Council

- Consults on and approves quality, engagement and total cost of care measures used in the model
- Recommends and approves approach for data collection, measurement, and performance expectations
- Advises how CO reports on performance

Data Subcommittee

- Define options and recommendations for data collection, reporting and performance measure development to incorporate in SAM design

I-CWG

- Identify clinical areas of opportunity and populations of focus
- Identify, implement, and optimize interventions that make an impact

SAM Program Guide

Initial Guide Components

- Definitions of key terminology
- SAM Vision, Goals and Commitments
- SAM Shared Savings calculation methodology
- Details of Assignment methodology
- Payment paths grid – list of continuing payment streams: FFS, PCPM, Quality Pool
- Key data/reporting that will be shared

Future state (developed with Oversight Council and included as items are landed)

- Key performance indicators
- In-depth data sharing - definitions, details, and timeframes
- Shared Savings distribution methodology



The Support Package is designed to support network partner knowledge of the SAM model and the impact to clinic and organizational operations that affect finances

All elements of the package are optional - Partners can self-select

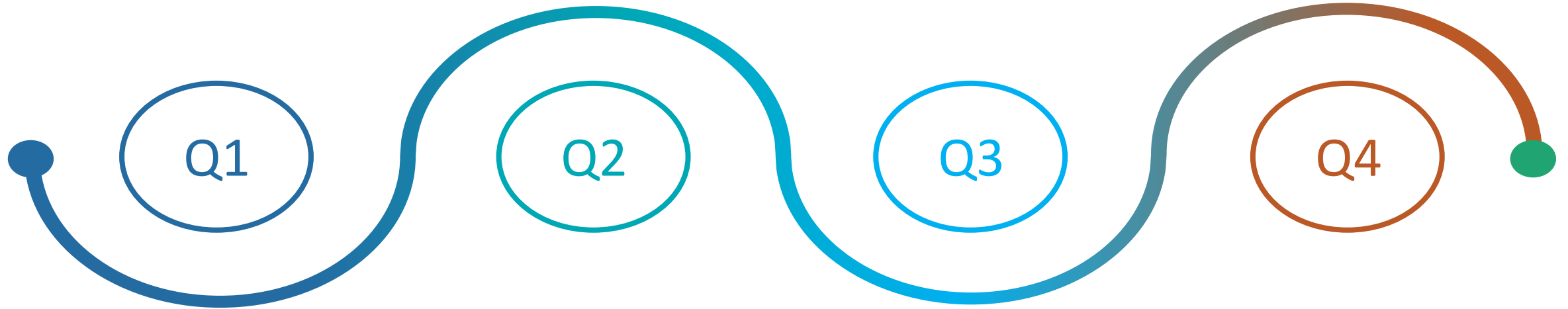
Assess...	Develop & Enhance...	Implement & Monitor...
Areas of strength and opportunity for optimizing successful participation in SAM and anchored by SAM goals and objectives	Capacity, systems, and skills for managing clinical, financial, and operational performance and risk	The work with appropriate business tools to operationalize and measure impact and patient outcomes

Outcomes:

- Network partners will be able to translate the financial model into actionable data that, alongside an evaluation of organizational and care delivery systems, will inform selection and implementation/optimization of interventions, programs, and processes to support sustainable participation and success in SAM.



SAM 2022 Milestones Roadmap



Launch data sub-committee: define data needs and current-state data sharing capabilities

Data – sharing and reporting: overview of data and reporting we currently share in risk arrangements

Social Health & Health Equity - Begin Scoping: What are the intermediate and long-term visions for incorporation in SAM.

Data-sharing and reporting: identify standard data set to include in Weekly reporting

Social Health & Health Equity – Scoping and Developing: defining options for intermediate and long-term incorporation

SAM 2023+ model refinement

Data-sharing and reporting: Cost and Utilization Opportunity Report; Enhanced Member-Level Reporting

Social Health & Health Equity – Developing: recommendations and decisions on data/measures for 2023

SAM 2023+ model recs

Data-sharing and reporting: Comparison Reporting – Cross-clinic comparison of costs, coding, and quality

Social Health & Health Equity – Implementing: finalize 2023 approach and operationalize data collection/reporting processes

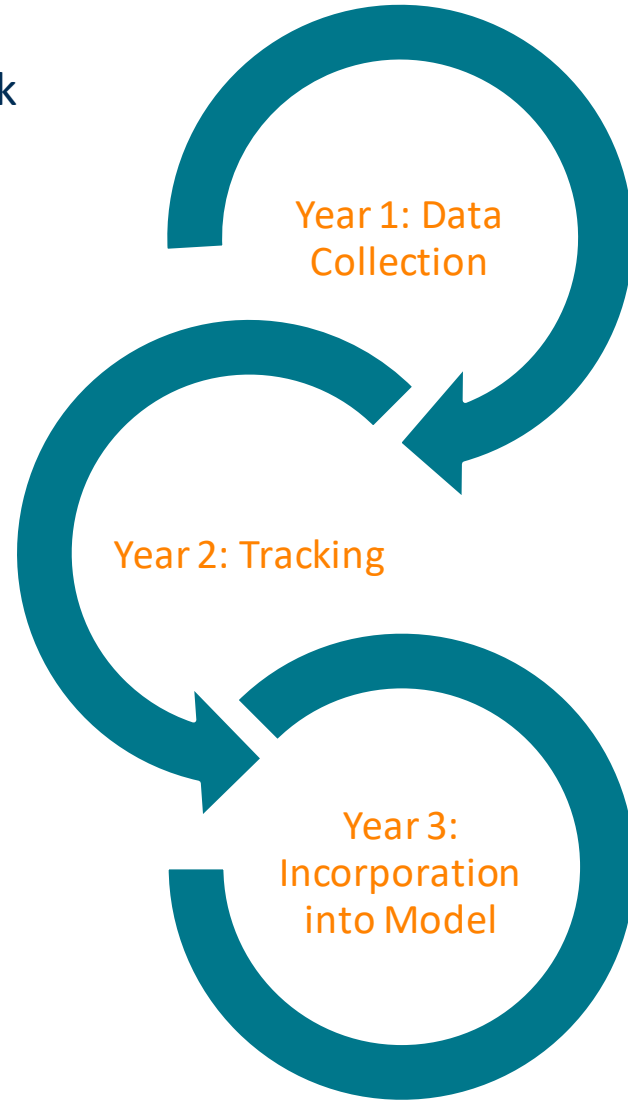
SAM 2023+ contract draft & roadmap

SDOH and Risk Adjustment Roadmap

One way to use data in risk share agreements: Adjust the financial model



Steps for moving to Social Risk Adjustment



Actionable uses of data to inform and impact member health and need:

- Stratify the population
- Design interventions and engage members
- Inform community investments

The great work you are already building and doing to impact member health-related social needs will drive savings during this time period



What has success been so far?

- FQHCs leadership engagement – almost 100% attendance!
- Governance and charter voted and agreed upon
- VBP model and transparency throughout co-design process
- Launched data sub-committee
- Signed VBP contracts! 😊

SAM future opportunities:

- Jointly developed clinical quality management infrastructure
- Data sharing with cost savings and quality improvement opportunities
- Advance VBP LAN levels overtime
- Champion risk adjustment for behavioral health, SDOH and health equity
- Share lessons learned; best practices are spread to other health centers across Oregon



Questions?

Break time

Return by 10:45 PST/ 11:45 MST

Up next, breakout sessions!

1. Oregon Value Based Contracting Health Leadership Panel
2. Building Up your Workforce with a Trauma-informed Lens
3. Exploring the use of Z-Codes for Social Needs Documentation



Breakout Sessions – select one

#1 Oregon Value Based Contracting Health Leadership Panel

Objective:

Learn how Oregon health care leaders move the needle on their organization's vision for health equity and value-based contracting

Presenters:

Leaders from Rogue Community Health Center, CHCs of Multnomah County, Yakima Valley Farmworkers Clinic . Virginia Garcia Memorial Health Center, and CareOregon

#2 Building your Workforce with a Trauma-informed Lens

Objective:

Discuss stressors and trauma related to returning to “normal” how to support yourself and staff using trauma-informed principles

Presenter:

Steffannie Roache, Trauma Informed Oregon

#3 Use of Z-Codes for Social Needs Documentation

Objective:

Learn how a rural health center and their local CCO collaborated and explored z-code documentation implementation strategies for social needs screening documentation.

Presenters: Angelica Godinez and Brendan Johnson of Rinehart Clinic and Keshia Bigler, formerly at Columbia Pacific CCO



Virginia Garcia Memorial
HEALTH CENTER



**Yakima Valley
Farm Workers Clinic**

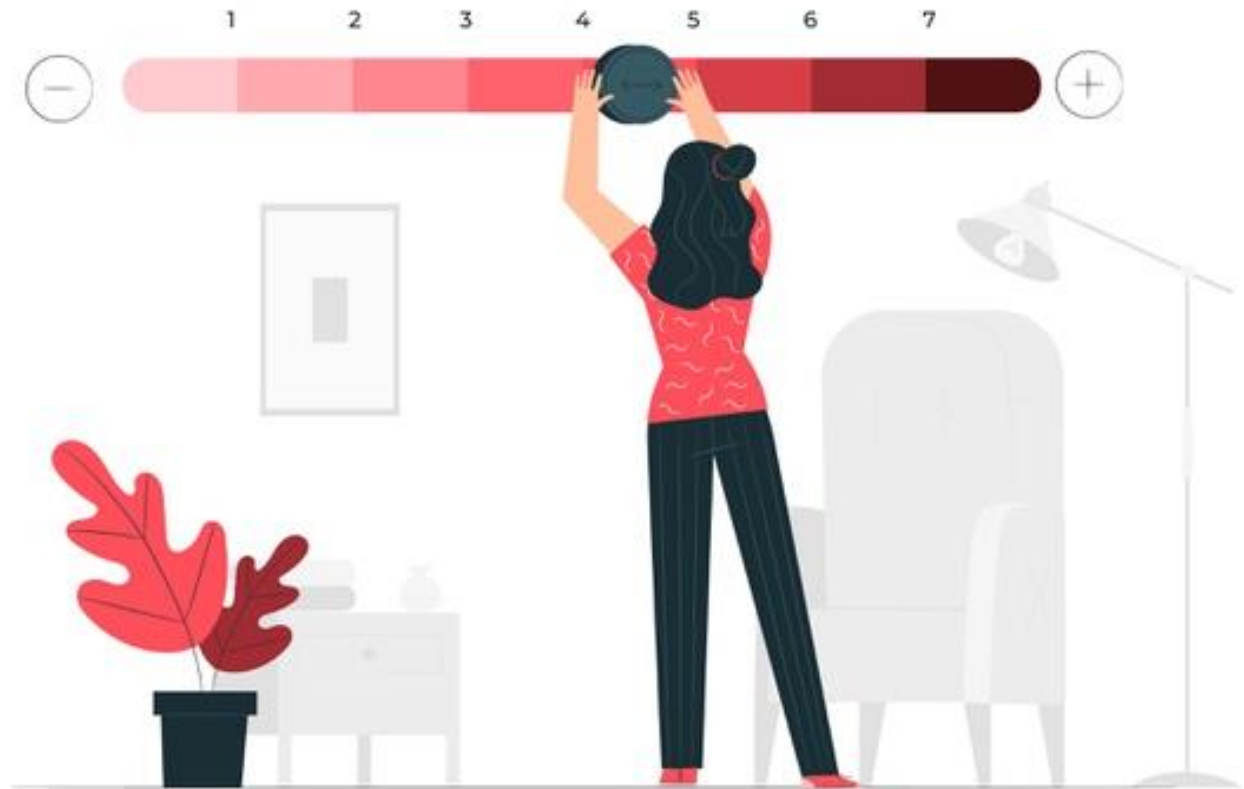
Oregon Value Based Contracting Health Leadership Panel

Moderated by John Duke, CHC Network of Oregon (CHCNO)

Thank you!

Please complete
today's evaluation

Materials will be shared by
the end of the week.



Stay Informed

- Get CHC news, events, and important member information by signing up for OPCA's monthly Member Update
- Visit OPCA's website for COVID-19 resources and more: www.orpca.org
- Read or contribute Member Stories to OPCA's blog: <https://action.orpca.org/blog/>
- Follow us:



Do you have the latest dose of COVID-19 vaccine information?

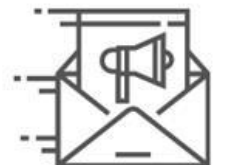
Sign up and read OPCA's monthly Member Update for the most recent news on the vaccine rollout, along with other important tools, resources, and updates for Oregon CHCs



Policy Updates



Member Stories



Peer Newsletters

Member Update is sent out the first Wednesday of every month, plus special editions

To sign up go to: https://action.orpca.org/newsletter_signup/

Related Resources + Upcoming Opportunities

<p>NWRPCA Webinar: Value-Based Care 101</p> <p>Tuesday, June 21 at 12:00pm PST</p>	<p>Learning Objectives</p> <ul style="list-style-type: none"> • List the fundamental differences between fee-for-service and value-based care. • Describe how payment structures, including alternative payment models (APM) and outcomes-based incentives (pay for performance), function in a value-based care delivery system. • Understand how value-based care delivery can be leveraged to advance health equity • Registration is free.
<p align="center">APCM Learning Forum Save – the – date Tuesday, August 23, 2022</p>	
<p>Health Care Payment Learning & Action Network Town Hall</p> <p>Thursday, July 21 @12:00pm PST</p>	<p>What: Features live discussions with diverse panels of providers, payers, clinicians, purchasers, and other stakeholders as they share their insights and perspectives on accountable care.</p> <p>Website: https://hcp-lan.org/lan-town-hall/</p>
<p align="center">NACHC’s Elevate</p> <p>What: Elevate is a national learning forum supporting health center systems change through application of NACHC’s Value Transformation Framework. The goal is to advance improved health outcomes, improved patient and staff experience, and reduced costs.</p> <p>Website: https://www.nachc.org/clinical-matters/quality-center/initiatives/</p>	