

OUTREACH & ENROLLMENT WEBINAR

OREGON PRIMARY
CARE ASSOCIATION

1:00 AM - 2:00 PM
OCTOBER 13, 2015

Welcome

Proposed Agenda

- Welcome
- State of O&E
- Migrant Seasonal Agricultural Workers
- Community Partner Update

State of O&E

What are challenges you are experiencing that could use support?

- FFM training is time consuming and
- Long wait times at the customer service center
- Unpredictability of renewals
- Urgent case response time seems like a “hit or miss” sometimes its quick and other times it delays

What are needs/wishes you would like to see met to support your O&E efforts?

- Regionally assigned customer service reps from OHA to Community Partners
- Grouping households together for OHA renewals

Migrant Seasonal Agricultural Workers

What are some ways your health center is supporting migrant and agricultural workers in your service area?

Migrant Seasonal Agricultural Worker resources

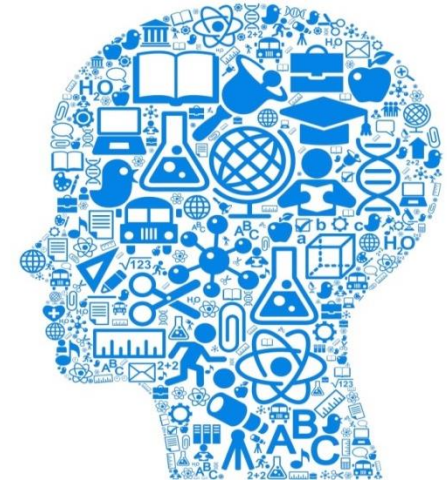
- <http://www.migrantclinician.org/> - serves health professionals provide care for migrants
- <http://www.ncfh.org/> - provides technical assistance and training to organizations involved in farmworker health
- <http://mhpsalud.org/> - implements, runs, and support CHWs

Enrollment

An update from the Community Partner team

(visit the Community Partner Update presentation)

O&E Growth Opportunities



OPCA Trainings

- November 10, 2015 from 9:00 – 4:00 PM F2F Training in Portland, OR
- Registration coming soon!

How the Affordable Care Act Helps Transgender & Gender Non-Conforming Patients

- October 14, 2015
- Register:
https://hrsa.connectsolutions.com/aca_transgender_patients/event/registration.html

OHA Community Partner Collaboratives

- Email Betse Thielman, elizabeth.s.thielman@state.or.us or Antonio Torres, antonio.torres@state.or.us

Thank you!



Connect with us

- scastano@orpca.org, Outreach & Enrollment Coordinator, OPCA
- ctranchese@orpca.org, Training & Development Manager, OPCA
- elizabeth.s.thielman@state.or.us, Provider Campaign Coordinator, OHA